

The Louisiana Colorectal Cancer Roundtable (LCCRT) is a coalition of health systems, providers, insurers, researchers, advocates, and community members dedicated to fighting the disease through awareness, screening promotion, comprehensive policy, and systems improvement.

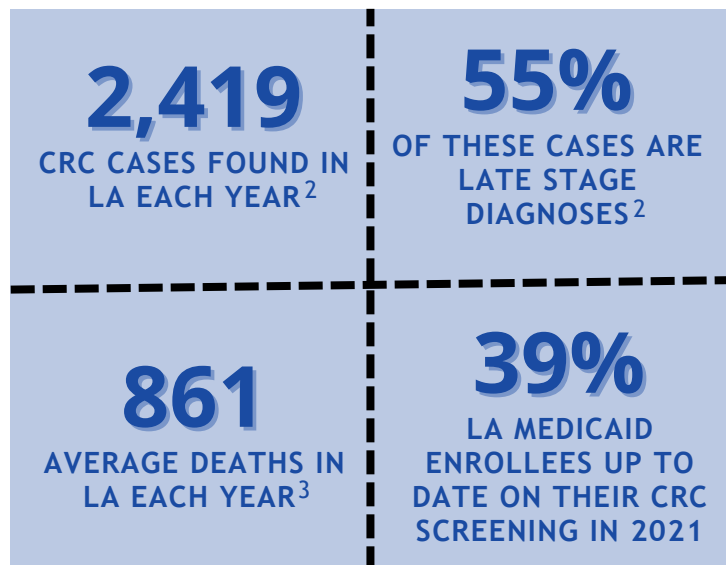
## WHAT IS COLORECTAL CANCER?

Colorectal cancer (CRC) is a term used to classify cancer that starts in the colon or rectum. It typically begins as a noncancerous growth called a polyp and develops slowly between a period of 10-15 years.

## LOUISIANA COLORECTAL CANCER STATISTICS



The 5-year relative survival for Louisianans with CRC (all races)<sup>2</sup>



## LCCRT GOALS AND OBJECTIVES

Goal 1: Increase colorectal cancer screening rates in Louisiana to 80%

- By 2027, reduce late-stage diagnosis of colorectal cancer in Louisiana from 54.7% to 49.2%.
- By 2027, decrease incidence of colorectal cancer in Louisiana from 44.9 to 40.4 per 100,000
- By 2027, reduce colorectal cancer death rates in Louisiana from 16.4 to 8.9 per 100,000

Goal 2: Reduce and/or address health disparities associated with colorectal cancer

- By 2027, increase colorectal cancer screening rate among black males in Louisiana from 73.1% to 76.8%.
- By 2027, increase the colorectal cancer screening rates for [East Carroll Parish (54.2%), Tensas Parish (57.1%), Madison (57.7%), Evangeline Parish (58.2%), St. Mary parish (58.7%)] to 74.4%.

## HOW CAN YOU HELP?

Through funding from the state legislature, LCCRT can better achieve these goals. Funding will help implement strategies such as public education, provider education and training, community health worker training, and targeting vulnerable populations.

### Sources

1. Centers for Disease Control and Prevention, USCS Data Visualizations, 2024
2. Louisiana Tumor Registry, Colorectal Cancer in Louisiana One Pager Infographic, 2024
3. Louisiana Tumor Registry, Louisiana Cancer Data Visualizations, 2024
4. Louisiana Department of Health, Medicaid Quality Dashboard, 2021